

DALAPRO[®]

HABITO JOINT

Ready mixed hand filler with high adhesion, special formulation for Habito Drywall.



Ready mixed, grey tinted hand filler for jointing and applying paper tape on Habito Drywall.

Approved for installing cornerbeads.

Superior hardness and impact resistance.

Adhesion properties guarantees the best adhesion for paper tape and corner beads.

For drywall and concrete.

Approved with EN-13963.

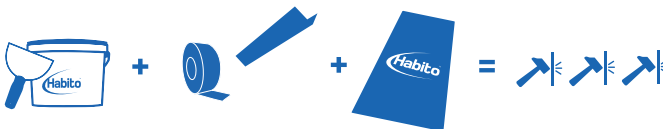
Nordic Ecolabelled.

DALAPRO® HABITO JOINT

Ready-mixed hand filler with adhesive effect.
For joints and corners.

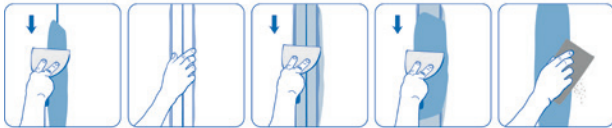
PRODUCT INFORMATION

Dalapro Habito Joint is a revolution in ready mixed hand fillers with superior properties on impact resistance and surface hardness. Special formulation guarantees the best adhesion for papertape jointing on Habito drywalls. Suitable for areas like schools, daycare centers, apartments and hospitals. Dalapro Habito Joint could also be used on standard drywall and is approved for installing cornerbeads. Nordic Ecolabelled.



USE

In combination with Certain Teed Marco Joint Tape, Dalapro Habito Joint is approved according to CE EN 13963 for jointing on Habito and standard drywall. Produced in liaison with ISO 9001 and ISO 14001. When treating plasterboard: follow recommendations in accordance with EN 13963.



INSTRUCTIONS

Apply Habito Joint Mix on clean, dry and firmly attached substrates. Fill the tapered edge, embed Joint tape and apply a thin layer on top of the Joint tape. After drying, finish Joints to requested quality. Do not apply Habito Joint Mix on substrates below +5 C. For sanding use sandpaper with 120-150 grit, wear safety equipment when sanding.

DRYING TIME

The drying time is dependent on factors such as substrate, layer thickness, temperature and humidity.

MATERIAL CONSUMPTION

For joint filling joints on plasterboard: approx. 0.3 litres/ metre.

CLEANING AND DISPOSAL

Remove as much filler as possible from the tools before cleaning them in water. Filler residues must not be poured down the drain, but taken to the local waste disposal centre. Empty packaging completely and recycle it.

STORAGE

Filler has a limited shelf life and is marked with a best before date. Unopened packaging can be kept in a dark place, free from frost, for up to 12 months. Containers that have been opened must be sealed well. Visit dalapro.com for more information.

TECHNICAL DATA

Binding agent: Latex co-polymer

Solvent: Water

Filler: White dolomite

Grain size: Max. 0.15 mm

pH: Approx. 9

Colour: Grey

Flammability: Does not spread or support fire

Packaging: 10-litre plastic bucket

Density: 1,75 kg/liter

Surface hardness: 12 mm (</=) according to EN520:2004 (5.12)



This product data sheet is provided for guidance only. The data presented does not constitute a guarantee that the product has certain properties or is suitable for a particular area of application. These values apply under normal circumstances. We reserve the right to make changes without prior notice. Users are responsible for ensuring they use the latest edition of this data sheet. Checks can be made at www.dalapro.com

Last amended 01/03/2019

Saint-Gobain Sweden AB, Scanspac
Kemivägen 7
SE-705 97 Glanshammar
+46 (0)19-46 34 00
dalapro.com
info@dalapro.com