

Dalapro[®]

Warm and vibrant or raw and industrial

Create concrete-like walls with Dalapro[®] Design




SAINT-GOBAIN



Create unique walls with a concrete feel

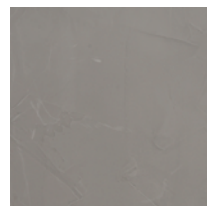
Dalapro® Design is a new filler specially developed for those who want to create walls with a concrete feel. Using one single product, you give walls both character and colour.

Dalapro Design is suitable for most substrates indoors, for example painted fabric, plastered surfaces, plasterboards and concrete walls or uneven walls that need freshening up. The outcome is a concrete-like surface with colour variations.

You apply Dalapro Design by hand using a putty knife. Once you have sealed the surface with Dalapro Design TopCoat, it is resistant to spills and scratches and is easy to keep clean.



Dalapro® Design is ready-mixed in two colours drawn from nature's very own colour scale and in white.



Concrete Grey



Calm Green



White Mix

The white filler can be tinted to produce any shade in your paint shop. You can of course also use it just as it is, if you want a white surface.



Made by you

A whole room or a wall. Warm and vibrant or raw and industrial. Your choice of colour and the way you apply it make the surface unique.

You are the one who defines the expression by choosing the colour and structure of the wall.

Short sweeps with the putty knife create finer variations. Long sweeps produce a more rustic, slightly rougher impression.



This is what you do

Apply filler to the whole wall in one go. Otherwise there is a risk of differences in shade.

Preparations

Make sure that all surfaces are clean and free of any dust or loose particles. Porous and highly absorbent substrate should be primed. Cover floors, skirting boards, door cases and cornices, and use masking tape on edges. If necessary: stir the filler so that any pigment is mixed well in before filling.

NB: To avoid colour differences:

Use packages with the same batch number.

Step 1 Apply Dalapro® Design using a putty knife to a thickness of approximately 1–1.5 mm. Leave to dry for 24 hours.

Step 2 Scrape away any edges and unevenness carefully with the putty knife. Avoid damaging the surface. If necessary, sand in circular movements using sandpaper with grain size 180–240.

Step 3 Apply the second layer of filler like a thin knife filler of 0.2–0.5 mm. You now apply the final finish to the wall, so make sure you adapt the filler to the desired end result. Short sweeps with the putty knife create finer variations. Long sweeps produce a more rustic, slightly rougher appearance. If you want a darker effect, apply a thicker layer. Leave to dry for 12 hours.

Step 4 Scrape away any edges and unevenness carefully with a putty knife, or use a sanding block and sand in circular movements. This helps the differences in shading to emerge. Remove dust after sanding.

Step 5 To produce a more maintenance-friendly surface, seal with Dalapro® Design TopCoat. Apply at least two layers using a foam rubber roller or a short-bristled paint roller. The drying time is approximately 2–3 hours.



Dalapro®

Experience the difference



Dalapro® is the Nordic region's leading supplier of filling products and accessories for professional craftsmen. The products have been developed to meet our customers' strict requirements for ergonomics, quality, economy and effectiveness. They are quality-assured to ISO 9001 and environmentally certified to ISO 14001. All products in this folder also bear the Nordic Ecolabel. Go to dalapro.com for more information about Dalapro® Design.

Saint-Gobain Sweden AB, Scanspac
Kemivägen 7
SE-705 97 Glanshammar
+46 (0)19-46 34 00
dalapro.com
info@dalapro.com



SAINT-GOBAIN