



PRODUCT DATA SHEET

SPEED CORNER 90

- Protection for external corners on internal.
- Self-adhesive strips for quick and easy install.
- Filler can be applied immediately. No need for setting time.
- Manufactured in recyclable polystyrene.
- Easy to cut to correct length using regular scissors.
- Sturdy, moisture-resistant packaging.

PRODUCT DESCRIPTION

Speed Corner 90 is a corner reinforcement for internal use. The corner reinforcement is quick and easy to mount, as it features a self-adhesive tape and is mounted with no need for any tools. The corner reinforcement is manufactured in environment-friendly, recyclable polystyrene plastic. In addition to its protective function and straight 90-degree corner, the product provides a sharp edge against which to apply filler. It is suitable for all kinds of external facing corners such as mouldings and cladding.

USE

Should be used together with a filler that is approved in accordance with the CE marking EN 13963.

Speed Corner is designed for mounting on plasterboard with paper face still attached. If the product is to be mounted on other materials, such as composite, fibre to plasterboard or cement-based panels, the surface on these should first be treated with a suitable adhesive primer. Adhesion to materials other than plasterboard must always be checked and primed before installation.

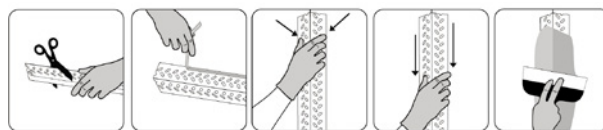
The surfaces the corner reinforcement is to be attached must be dry and free of dust. The temperature during mounting should stay 10°C or above.

HANDLING

Use gloves when working with filler. When sanding, use mouth and eye protection in order to avoid irritation from dust. Other local rules must be observed.

Technical data

Length:	2.7 m
Width:	40x40 mm
Area of application:	Indoors on plasterboard panels coated in cardboard
Storage:	Dry
Packaging:	Carton of 100 corner reinforcements



WORK INSTRUCTIONS

1. Trim the corner reinforcement to the desired length using regular scissors. The corner reinforcement should be trimmed 3–5 mm shorter than the corner on which it is to be mounted, to avoid it becoming jammed.
2. Remove all the protective foil before mounting. The protective foil has a non-adhesive edge on the inside, known as a finger lift, to make it easy to remove.
3. Continue the mounting process by aligning one end of the corner reinforcement symmetrically over the corner where mounting is to start. Press the corner reinforcement against the corner and press the edges of the reinforcement against the plaster to secure adhesion.
4. Continue to gradually press the corner reinforcement against the corner, pressing the edges against the plaster along the whole corner. Filler can now be applied to the corner.
5. Always use a highly adhesive CE 13963 joint filler for the best results.

DRYING TIME

The drying time is dependent on factors such as substrate, layer thickness, temperature and humidity.

MATERIAL CONSUMPTION

For applying filler to plasterboard: approx. 0.2 litres/metre.

STORAGE

Store in a dry place.